

Exam : Extreme Networks EW0-300

Title : Extreme Networks Specialist

Version : Demo

1. When limit-learning is configured on a port and the limit is reached the following traffic still flows to the port.

- A. Packets destined for the active Mac addresses
- B. Broadcast traffic
- C. EDP traffic
- D. All of the above

Answer: D

2. Extreme ware 7.0 supports both level1 and level 2 IS-IS routers.

- A. TRUE
- B. FALSE

Answer: A

3. The integrated IS-IS protocol allows for mixing of IP-only,OSI-only, and dual (IP and OSI) routers.

- A. True
- B. False

Answer: A

4. In OSPF, the router type that is required to connect an area with another area is the

- A. Designated Router
- B. Back-up Designated Router
- C. ASBR
- D. ABR

Answer: D

5. EAPS protection switching is similar to what can be achieved with the Spanning Tree Protocol but one of the big advantages of EAPS is

- A. EAPS also supports star topologies
- B. EAPS has a recovery time of less than a second in case of link failure.
- C. An EAPS domain supports multiple root bridges, thus alternative path

D. EAPS eliminates the need for protocols like ESRP or VRRP that bring default gateway redundancy.

Answer: B

6. On a RADIUS server you can distinguish between switch access and Netlogin authentication. Extreme provides a vendor specific attribute Extreme-Netlogin-only =disabled/enabled.

User authentication for both Netlogin and switch access is allowed when the value is disabled.

When the value enabled user authentication is restricted to Netlogin only.

A. True

B. False

Answer: A

7. The following modes of operation are supported with the Network login feature. (choose all that apply)

A. Secure mode

B. Campus mode

C. Quick Mode

D. ISP mode

Answer: ABCD

8. An LSP is a link state packet used by which routing protocol?

A. OSPF

B. RIP

C. BGP

D. None of these

Answer: D

9. It is possible to set an STP-threshold to switch from a shared tree to a shortest path tree. This switch over will be initiated by

A. The Rendezvous Point

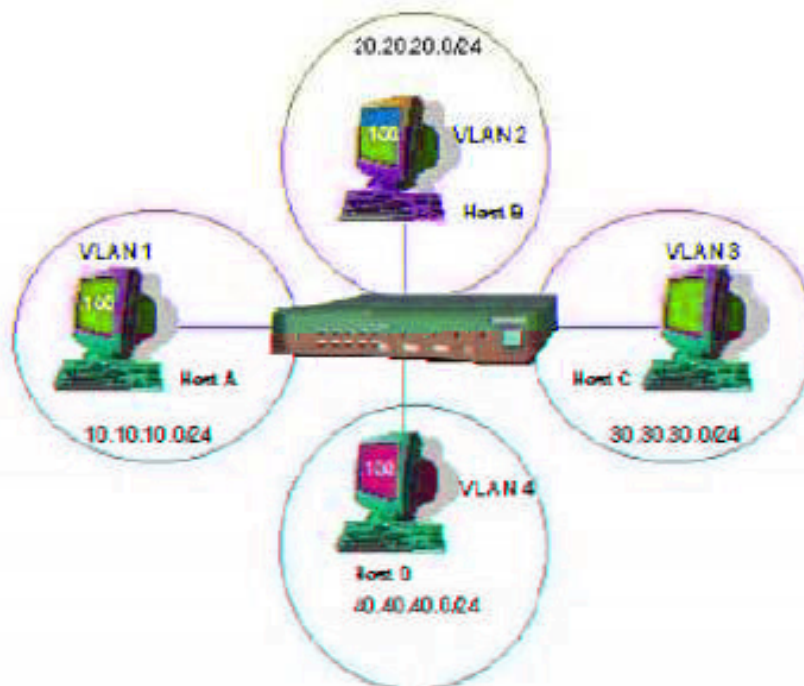
B. The Bootstrap Router

C. A last hop router

D. The router nearest to the source

Answer: C

10. Exhibit According to accompanying diagram and ACL configuration it is possible for Host A (10.10.10.100) and Host C (30.30.30.100) to successfully communicate.



```
create access-list ip1 ip destination 20.20.20.100/32 source 10.10.10.100/32 permit ports any ignore-overlap
create access-list ip2 ip destination 30.30.30.100/32 source 10.10.10.100/32 permit ports any ignore-overlap
create access-list ip3 ip destination 40.40.40.100/32 source 10.10.10.100/32 permit ports any ignore-overlap
create access-list ip4 ip destination 10.10.10.100/32 source 20.20.20.100/32 permit ports any ignore-overlap
create access-list ip5 ip destination 10.10.10.100/32 source 30.30.30.100/32 permit ports any ignore-overlap
create access-list ip6 ip destination 10.10.10.100/32 source 40.40.40.100/32 permit ports any ignore-overlap
create access-list default rule ip destination any source any deny ports any
```

A. TRUE

B. FALSE

Answer: A

11. The maximum number of EAPS domains supported per switch and ring is?

A. 64

B. 32

C. 16

D. 8

Answer: A

12. In Extreme Ware, which one of the following is an optional ESRP configuration that allows you to connect active hosts directly to an ESRP master or standby switch.

- A. ESRP Groups
- B. ESRP Domain
- C. ESRP Host Attach
- D. None of these

Answer: C

13. Which CLI command configures DVMRP on all IP multicast interfaces.

- A. config dvmrp add vlan all
- B. config dvmrp add all
- C. enable dvmrp
- D. enable dvmrp vlan all

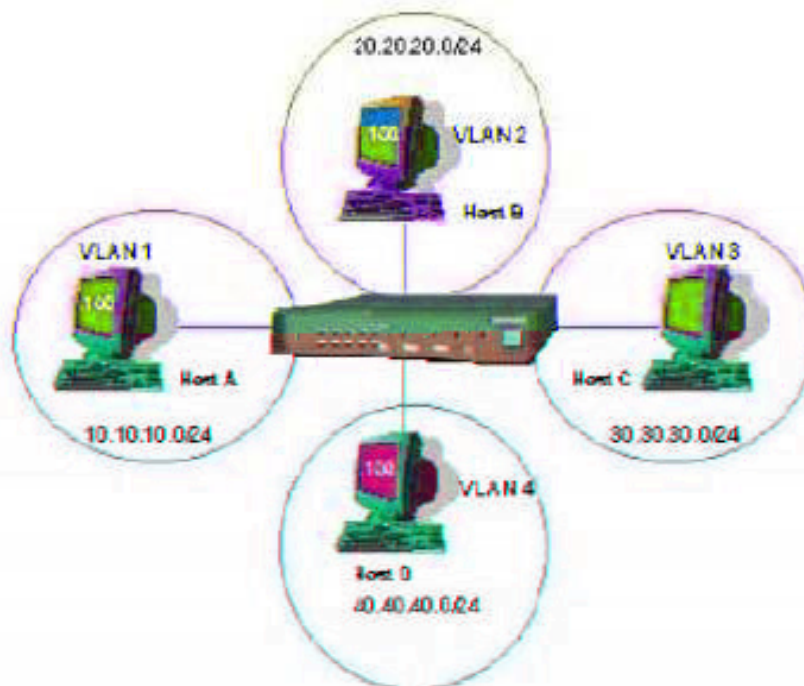
Answer: A

14. The following CLI command is valid to advertise SLB virtual servers in OSPF with a cost of 10. Enable ospf export vip cost 10

- A. True
- B. False

Answer: A

15. According to accompanying diagram and ACL configuration it is possible to telnet from host A to any of the switch IP addresses.



```

create access-list ip1 ip destination 20.20.20.100/32 source 10.10.10.100/32 permit ports any ignore-overlap
create access-list ip2 ip destination 30.30.30.100/32 source 10.10.10.100/32 permit ports any ignore-overlap
create access-list ip3 ip destination 40.40.40.100/32 source 10.10.10.100/32 permit ports any ignore-overlap
create access-list ip4 ip destination 10.10.10.100/32 source 20.20.20.100/32 permit ports any ignore-overlap
create access-list ip5 ip destination 10.10.10.100/32 source 30.30.30.100/32 permit ports any ignore-overlap
create access-list ip6 ip destination 10.10.10.100/32 source 40.40.40.100/32 permit ports any ignore-overlap
create access-list default rule ip destination any source any deny ports any

```

A. True

B. False

Answer: B

16. Extreme Networks IS? Chipset switches allows you to run simultaneously the Radius and Tacacs+features.

A. True

B. False

Answer: B

17. OSPF requires that all areas attach directly to the backbone area, and that all attachments are made with a direct physical connection.

A. True

B. False

Answer: B

18. An Ethernet Automatic Protection Switching (EAPS) domain relies on a control VLAN.

The ports in that control VLAN ports must be tagged, and participating in the ring only.

A. True

B. False

Answer: A

19. In SLB, Port Translation Mode is similar to Translation Mode, except that in Port Translation Mode the physical Port where the node connects to must be configured as a Fast Ethernet Half Duplex port.

A. True

B. False

Answer: B

20. In PIM sparse mode the Bootstrap Router election is based on the highest IP address.

A. True

B. False

Answer: B